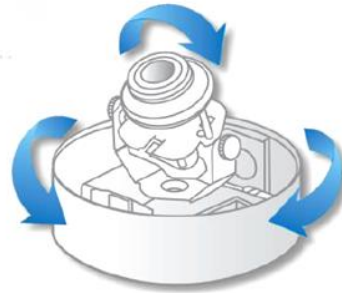


# IP CAMERA

Vandal Dome Camera | 3-Axis | PoE 802.3af | 30fps @ 1920x1080

## VD-21IR



**3- Axis Rotation!**  
Easily Adjust the Camera to the  
Optimal Viewing Angle

### *Compact design for the ultimate versatility*

Comtrend's VD-21IR compact vandal dome IP Camera is a full HD IP Camera that offers a compact design for the ultimate versatility. This sleek, compact design is perfect for remaining subtle while in indoor areas as well as remaining durable with vandal and weather proof certified housing for outdoor areas. It supports 3-axis (pan, tilt and lens module) manual rotation for easy adjustments for the proper viewing site, and with IR LEDs the VD21IR supports day/night function even in an environment with no light.

### KEY BENEFITS

- **Vandal & Weather Proof:**  
Vandal proof IK8 and weather proof IP66 certified casing.
- **Supports Multiple Video Streams:**  
Can simultaneously stream H.264, MPEG-4, and MJPEG to provide both high-quality and bandwidth-efficient formats
- **Local Recording:**  
Equipped with a MicroSD slot, video can be stored locally to ensure constant recording in case of a network interruption or failure.
- **Flexible Connectivity:**  
The VD-21IR offers a PoE option for easy deployment in hard-to-reach locations.

# VD-21IR

Vandal Dome Camera | 3-Axis | PoE 802.3af | Full HD



## SPECIFICATIONS

### Special Features

- Motion Detection: 3 Scalable Windows
- Privacy Mask: 3 Scalable Windows
- Recording Options: Remote Client, MicroSD Card or Remote Samba Recording
- Exposure Management: Full View/BLC (Metering Area), AWB, AES, AGC
- Image Settings: Brightness, Contrast, Sharpness, Saturation Adjustable
- Shutter Time: Auto/Menu Mode
- Mirror: Vertical, Horizontal
- Onvif Compliant: Support Onvif Profile S
- Digital Zoom: Up to 10x Digital Zoom
- Network Management: IP Filter, QoS (DSCP)
- Time Management: Manual Time Setting, Time Server & NTP Support, Real Time Clock
- User Access Control: Multi-Level User Access
- Multiple Streaming: Max. 3 Streams
- Configuration File: Backup to PC / Backup to SD card

### Event and Alarm Operation

- Alarm Trigger: Video Motion Detection, Digital Input
- Event Action: FTP, Email, SD Card Rec., NAS Rec., Digital Output
- Alarm Rec. Buffer: 5 sec Pre-alarm / 5 sec post-alarm

### Power Supply

- PoE / DC Power: PoE (IEEE802.3af) / DC12V
- Power Consumption (Max.): PoE: 6.6W / DC12V: 4.3W

### Mechanical Spec

- Dimensions, Weight:  $\varnothing$  110 mm x 80 mm (L), Net 500g
- Pan-n-Tilt: Pan: 350° ; Tilt:30~90°
- Weatherproof: IP66
- Vandal proof: IK8

### Image Sensor

- Max. Resolution: 1920(H) x 1080(V)
- Format: 1/2.5"

### Lens

- Focal Length: f=3.6mm
- Iris (F No.): F1.8
- Angle of View: H: 69.55°; V:37.44°; D:75.38°

### Day & Night

- Mechanical IRCF(ICR): Yes (Built-in Removable IR-cut filter)
- IR Distance (Max.): 20M, 850nm

### Min. Illuminators

- Color Mode: 0.05 Lux / B/W Mode: 0 Lux (IR On)

### Video Codec

- H.264: 30fps @ 1920x1080 (Max. 1080p)
- MPEG-4: 20fps @ 1920x1080 (Max. 1080p)
- MJPEG: 30fps @ 720x480 (Max. D1)

### Interface

- Local Storage: Supported SD/SDHC, Max. 32GB
- Network: Fast Ethernet (10/100Mbps) RJ-45 port
- Digital Input x 1 / Digital Output x 1
- Audio in/out: Two-way, Supports G.711 $\mu$ -Law  
RCA-In x 1 / RCA-Out x 1 (3.5mm)

### Environment

- Operating Temp.: -10°C~55°C (-4°F~131°F)
- Humidity: 20%~90% RH
- Storage Temp.: -20°C~60°C (-4°F~140°F)

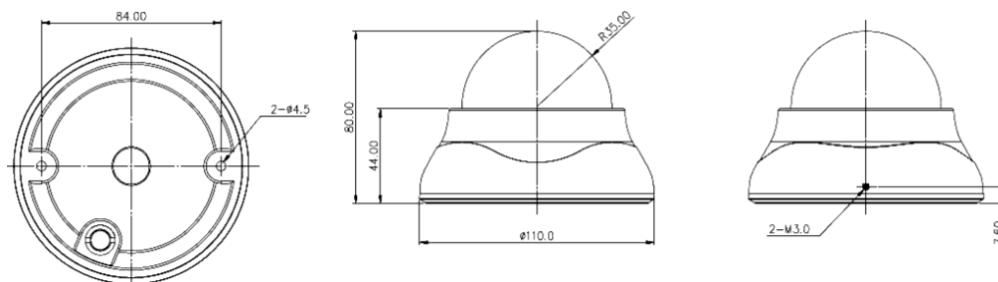
### Certificate & Warranty

- CE class A, FCC class A
- Warranty: 2 Years

## FEATURES

- Multi-stream from H.264/MPEG-4/MJPEG
- 30 fps @ 1920x1080
- Built-in 3.6mm, IR mega lens
- Supports two-way audio
- IR illuminators, effective up to 65 feet
- Built-in MicroSD card slot(32GB max)
- Vandal proof IK8
- Weather proof IP66
- Supports iOS and Android
- PoE Power (IEEE802.3af)

## DIMENSIONS



**COMTREND CORPORATION**

#### Taiwan:

3F-1, No.10, Lane 609, Chongxin Road, Section 5,  
Sanzhong Dist, New Taipei City 24159, Taiwan  
Tel: 886-2-2999-8261  
Fax: 886-2-2999-8497

#### USA & Canada:

14 Chrysler, Irvine CA 92618, USA  
Tel: 1-949-7539640  
Fax: 1-949-7539020

#### Spain:

Edif. América II C/Prócion,7 portal 3 bajo H 28023  
Madrid, Spain  
Tel: 34-917990403  
Fax: 34-913510999

#### Czech Republic:

TOKOVO Jankovcova 1518/2, 170 00, Prague 7,  
Czech Republic  
Tel: 420-266-782040  
Fax: 420-266-782990